



Illinois Council on Best Management Practices

June 2015



Illinois Council on Best Management Practices

Coalition of agricultural organizations and agribusinesses:

- Illinois Farm Bureau
- Illinois Corn Growers Association
- Illinois Soybean Association
- Illinois Pork Producers Association
- Illinois Fertilizer and Chemical Association
- Syngenta
- GROWMARK
- Monsanto



Illinois Council on Best Management Practices

Our Mission

To assist and encourage adoption of BMPs to protect and enhance natural resources and the sustainability of agriculture in Illinois





CBMP Goals

- Information: Gather current and accurate information on effective/economically viable BMPs and programs
- Awareness: Increase awareness of water quality issues and BMPs
- Participation: Increase farmer participation in programs and adoption of BMPs
- Demonstration: Using the Nutrient Loss Reduction Strategy as a guide, demonstrate and track adoption of BMPs



Education

- Field days
- Presentations, regional/watershed meetings
- Substantive printed and online information



Promotion



- Statewide Strategy Meetings
- Print, radio and online ads
- Tele-town hall phone calls to targeted producer across the state
- Targeted e-blasts and social media coordination
- Collaborative grassroots effort from our member organizations
- Message is geared at farmers, agribusiness and general public

Cover Crop Training Initiative

- Utilize 5 regional cover crop specialists to provide training, education and outreach to promote use of cover crops for nutrient management in production agriculture
- Cover crop specialists will:
 - Set up meetings across the state
 - Partner with local SWCD, NRCS and Ag Departments at Community Colleges to establish a network for education and outreach
 - Develop cover crop plots across the state at community colleges and on farm locations to encourage student instruction and demonstration
 - For a complete listing of upcoming meetings visit www.illinoiscbmp.org



Cover Crop Training Initiative

Contact a Cover Crop Specialist

Dean Oswald - Northern Illinois
doswald@illinoiscbmp.org

Pete Fandel - North Central Illinois
pete.fandel@icc.edu

Dick Lyons - South Central Illinois
rlyons@speednet.com

Mike Plumer - Southern Illinois
plumermike@gmail.com

Dan Towery – Eastern Illinois
dan@agconservationsolutions.com



Demonstration Projects

Illinois Demonstration Farms Partnership –
Three locations have been identified to add edge of field water monitoring to farm scale demonstration sites that have implemented one or more BMPs.

- Lincoln Land Community College – Sangamon Co.
- Roberts Site – Peoria Co.
- Illinois Central College – Peoria Co.



Trees Forever Illinois Buffer Partnership

Over the past 15 years, this program has provided assistance to more than 200 demonstration projects across Illinois. Over 4100 acres of conservation buffers have been planted, protecting more than 57 miles of Illinois streams.



N-WATCH

N-WATCH – A tool to use with N Management Systems to monitor N dynamics at a point in the field

- The tool can be used to learn more about N behavior and to build your confidence on how to better manage your second greatest input cost, nitrogen to
- **Maximize utilization**
- **Optimize yield**
- **Minimize environmental impact.**



N-WATCH

Sentinel Site Program

- The sentinel site program provides a way to watch the dynamics of plant-available N in the upper two feet of the soil profile over time by following abbreviated and anonymous local farmer N-WATCH Reports.



- To sign up visit www.nwatchonline.com



CBMP Supports IFCA's Keep it 4r crop program

Nutrient stewardship program to reduce nutrient losses from agriculture, focusing on the 4Rs of Nutrient Use:

Right Source
Right Rate
Right Time
Right Place

Seeks to educate ag retailers and farmers:

- Managing nutrients as a system, not an application.
 - It's about losing less nutrients and utilizing more.
 - It's about accountability, and profitability
-
- On-farm Nitrogen Rate Trials



Lake Springfield Watershed Nutrient Management Project

Project Timeline

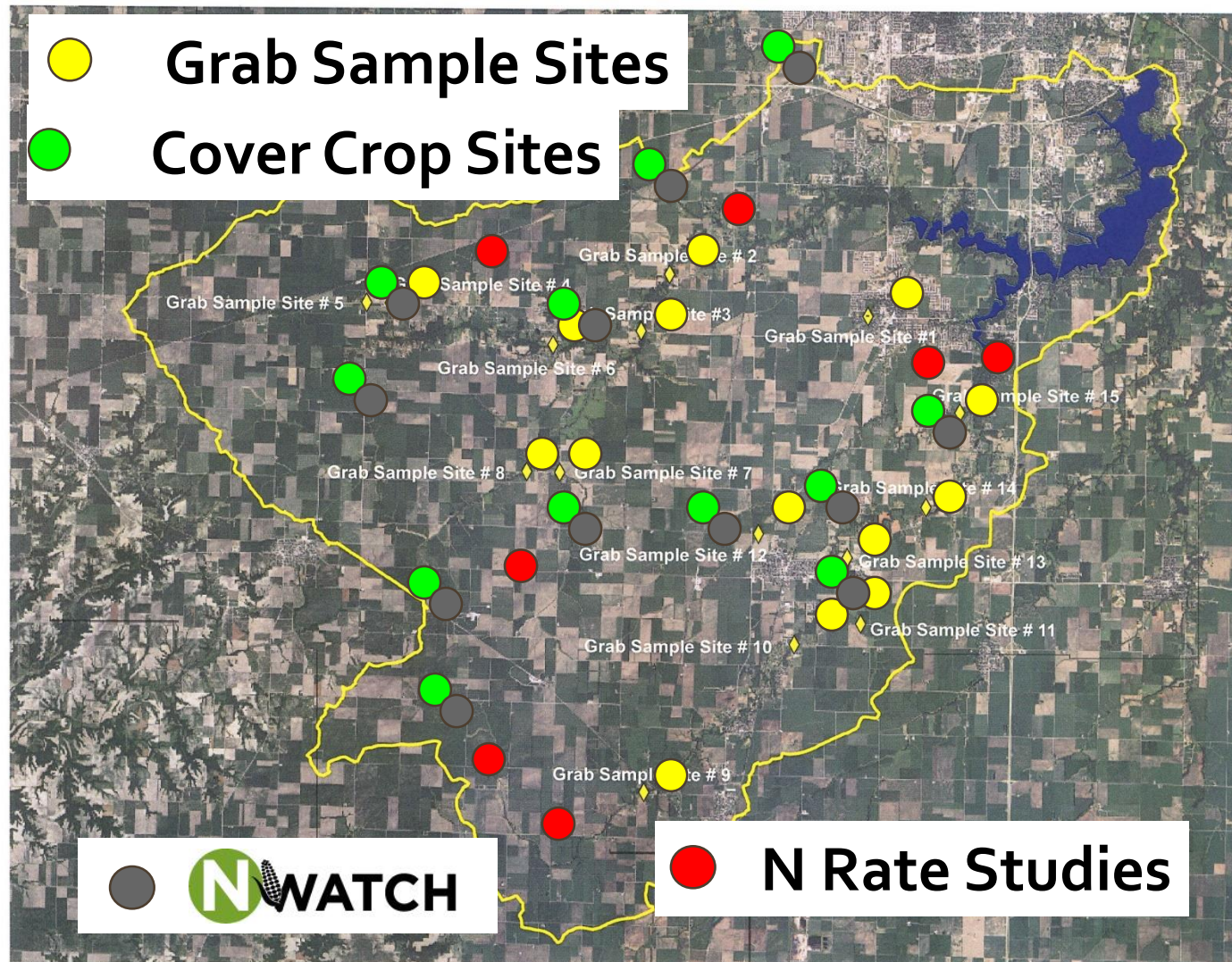
- Three year project (2013 – 2016)

Funding Partners

- National Fish and Wildlife Foundation
- Springfield's City, Water, Light and Power

Project Goals

- Achieve a sustained reduction in nitrate loading from agricultural non-point sources
- Help understand the trends in nitrate levels within the Lake Springfield Watershed



Online Resources

Looking for a one-stop shop for videos, webinars, news articles and other resources about BMPs?

Visit www.illinoiscbmp.org and join our newsletter!

C-BMP
Illinois Council on Best Management Practices

Search...

LATEST NEWS & REPORTS

NUTRIENT LOSS REDUCTION STRATEGY

WATERSHEDS

EVENTS

KIC 2015

NITROGEN MANAGEMENT

DEMONSTRATION FARMS

RESOURCE LINKS

COUNCIL MEMBERS

CONTACT US

RECEIVE OUR E-NEWSLETTER

email address

OUR MISSION

Working to assist and encourage adoption of best management practices (BMPs) to protect and enhance natural resources and the sustainability of agriculture in Illinois.

OUR GOALS

Identify effective, environmentally sound and economically sustainable BMPs for production agriculture.

Increase farmers' voluntary adoption of BMPs through promotion, education, information, transfer, demonstration, evaluation, incentives, and recognition programs.

Communicate with stakeholders the progress made toward BMP adoption.

Learn More about BMPs

Come to our crop field day at Sugar Grove Nature Center in McLean County on April 30th.

APRIL 28

#Illinois #CBMP announces nutrient loss reduction strategy roadshow dates in June **#NLR5** <http://ow.ly/MdY18> **#WhatsYourStrategy? #ag**

APRIL 17

#Illinois #CBMP has supported Trees Forever for over 15 years check out some of great projects we help fund <http://ow.ly/LJYQq>

APRIL 14

#Illinois CBMP announces \$60,000 for on **#farm** nitrogen program **#NWATCH** sign up today! <http://ow.ly/LAulL> **#agriculture #farmers #soils**

FOLLOW US

Collaboration

CBMP will continue to work together with local partners including:

- Universities
- Community colleges
- SWCDs
- Municipalities
- Local watershed groups
- State and national governmental agencies
- Private companies
- State and national commodity organizations



Survey – Why is it important?



Nutrient Loss Reduction Strategy Program Survey

Name: _____ Address: _____
City/State/ZIP: _____ County: _____
Email: _____ Phone: _____
Meeting Location: _____

1. What is your relationship to farming?

☐ Farm Owner/Operator ☐ Agribusiness ☐ Agency/NGO Staff ☐ Other _____

Please answer questions 2a-2d if you are a farm owner or operator:

2a. Have you ever used no-till or strip-till in your farming operation?

☐ YES ☐ NO
If yes, what percent of your corn/soybean acres were no-tilled/strip-tilled? _____ % corn acres: _____ % soybean acres: _____
If yes, how long have you done so? ☐ 5 years or less ☐ 6-10 years ☐ More than 10 years

2b. Have you ever used nutrient management practices on your farm?

☐ YES ☐ NO
If yes, how long have you done so? ☐ 5 years or less ☐ 6-10 years ☐ More than 10 years
Please answer the following questions:
- Do you regularly soil test for P & K levels? ☐ YES ☐ NO
- Do you follow the UI Agronomy Handbook recommendations for P and K applications? ☐ YES ☐ NO
- Do you use Variable Rate Technology (VRT) for fertilizer applications? ☐ YES ☐ NO
- Do you use the Maximum Return to Nitrogen (MRTN) recommendation for nitrogen rates? ☐ YES ☐ NO
- Do you apply nitrogen only in the spring? ☐ YES ☐ NO
- If you fall apply anhydrous ammonia, do you wait until the soil temperatures fall to 50 degrees? ☐ YES ☐ NO
- Do you use a nitrification inhibitor for fall applied ammonia? ☐ YES ☐ NO
- Do you use nitrification or urease inhibitors with your spring applied nitrogen? ☐ YES ☐ NO
- Do you split your nitrogen applications? ☐ YES ☐ NO

2c. Have you ever used cover crops in your farming operation?

☐ YES ☐ NO
If yes, how long have you done so? ☐ 5 years or less ☐ 6-10 years ☐ More than 10 years
Percentage planted for the most recent year you used cover crops? _____
What types of cover crops:
☐ Winter cereal grains (e.g. winter wheat, cereal rye, winter barley)
☐ Annual grasses (e.g. annual ryegrass, sorghum, oats)
☐ Legumes (e.g. clover, winter pea, vetch)
☐ Brassicas (e.g. radish, mustard, rape, turnips)
☐ Summer annual broadleaf (e.g. buckwheat, cowpea)
☐ Two species mix
☐ 3+species mix
☐ Other: _____



Jennifer Tirey

Illinois Council on Best Management Practices

(217) 971-3842

jtirey@illinoiscbmp.org

